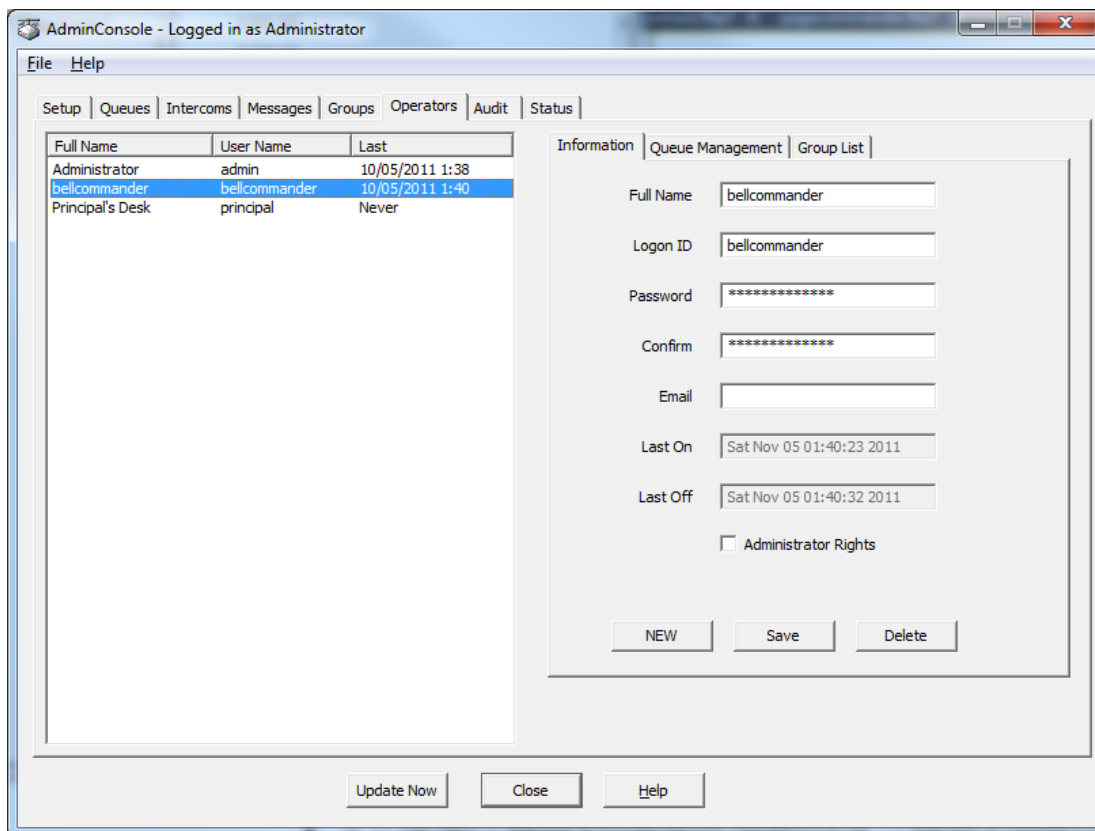


# BellCommander Digital Acoustics Installation Guide

**Overview:** BellCommander works with Digital Acoustics IP7 systems to provide audio scheduling and mass notification functions. BellCommander is often used in school environments for scheduled bells or chimes and in manufacturing environments for factory shift change horns. BellCommander can either work directly with IP7 units or BellCommander can work with TMEE server as a console to allow paging and intercom functions through TMEE server and clients.

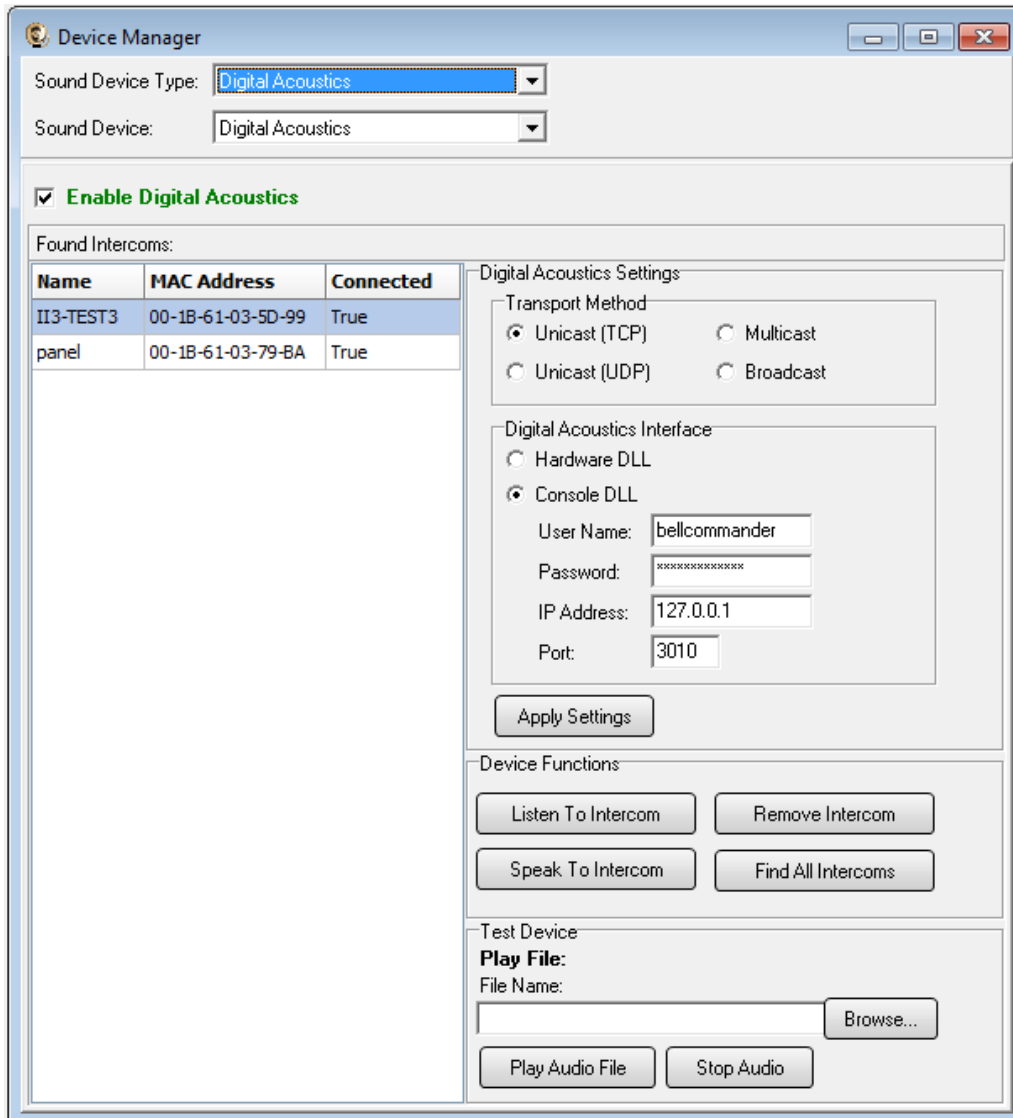
## Installation with TMEE Server:

If TMEE Server will be used with the Digital Acoustics system, BellCommander should be configured as a TMEE console. If TMEE Server will not be used, continue to the instructions on page 3 for configuring BellCommander with direct hardware control. To configure BellCommander as a Digital Acoustics console, first add a user for BellCommander in the TMEE Administrator tool. The name of the user and login ID should be bellcommander. The password could also be bellcommander or a different password. The password should be noted since it will need to be entered into BellCommander. The bellcommander user should only be used by BellCommander and no TMEE consoles should login as the bellcommander user. Also, there should be enough TMEE console licenses available to allow the bellcommander user plus TMEE Console users to login. Additional TMEE Console licenses can be purchased through Digital Acoustics.



After adding the BellCommander user to TMEE Server, BellCommander should be configured to connect to TMEE Server. First, install BellCommander from the license and download instructions provided with BellCommander. The console installer should be used. The console installer should have “cons” or “console” in the file name (ex. bcappservice500da50console.exe). Then, open BellCommander and click the Devices button to open the Device Manager. Select “Digital Acoustics” from the Sound Device Type drop-down and check the Enable Digital Acoustics box. BellCommander will initially display an error that the Hardware DLL is selected, but the error can be ignored. Under the Digital Acoustics interface, select Console DLL and enter the name and password of the user added to TMEE Server. Then, enter the IP address of the TMEE Server. If BellCommander and TMEE are installed on the same server, enter 127.0.0.1 for the IP address. The port should be 3010, unless the port was manually changed in TMEE Server. After entering the settings, click the Apply Settings button.

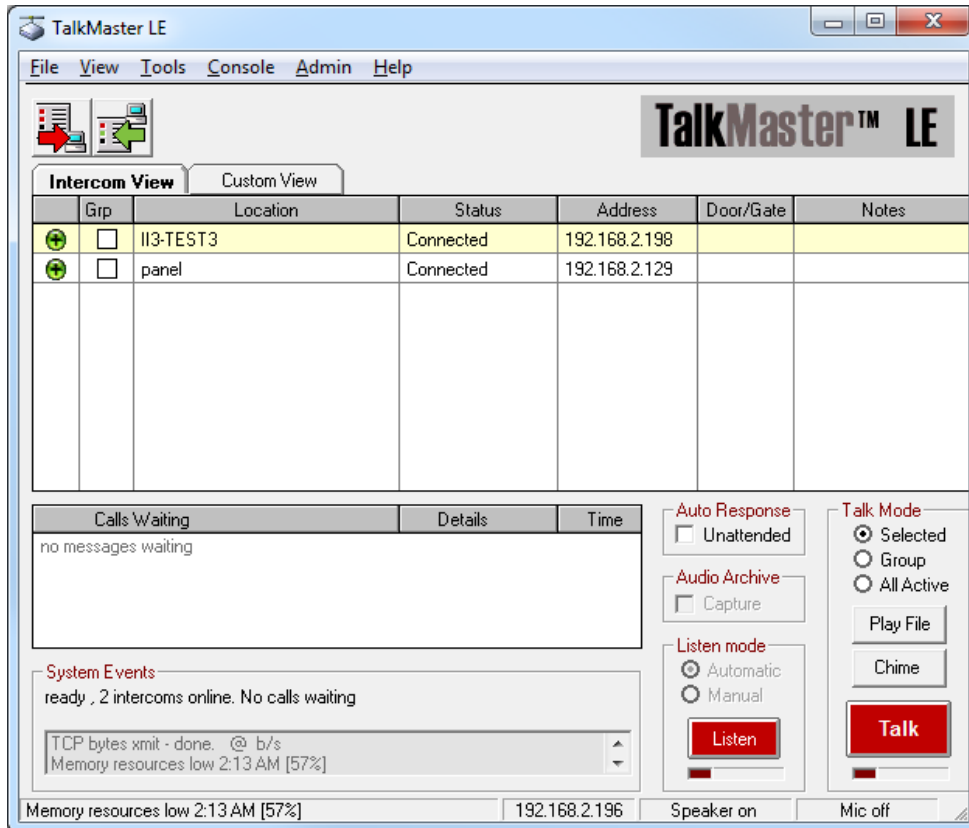
After entering the settings, the list of intercoms from TMEE Server should be displayed on the left side of the window.



### Installation without TMEE Server (Direct Control-Hardware):

If TMEE Server will not be used, then BellCommander can be configured to communicate directly to Digital Acoustics IP7 modules. If TMEE Server will be used, skip to page 5.

To configure BellCommander to connect to Digital Acoustics units, TMEE LE should be installed and ran on the PC or server that BellCommander will be installed on. The intercoms should be added to TMEE LE and the intercoms can be tested by clicking the Play File button. See the instructions in TalkMaster LE on how to retrieve and configure intercoms.



After adding the intercoms to TalkMaster LE, close TalkMaster LE by selecting File|Exit from the TalkMaster LE menu. If BellCommander is not installed yet, install BellCommander from the license and download instructions provided with BellCommander. The hardware installer should be used. The hardware installer should have “hw” in the file name (ex. bcappservice500da50hw.exe). Then, open BellCommander and click the Devices button to open the Device Manager. Select “Digital Acoustics” from the Sound Device Type drop-down and check the Enable Digital Acoustics box. After enabling Digital Acoustics, the list of intercoms from TMEE Server should be displayed on the left side of the Device Manager window.

**Device Manager**

Sound Device Type: Digital Acoustics

Sound Device: Digital Acoustics

**Enable Digital Acoustics**

Found Intercoms:

Name	MAC Address	Connected
panel	00-1B-61-03-79-BA	True
II3-TEST3	00-1B-61-03-5D-99	True

**Digital Acoustics Settings**

Transport Method

Unicast (TCP)     Multicast

Unicast (UDP)     Broadcast

**Digital Acoustics Interface**

Hardware DLL

Console DLL

User Name:

Password:

IP Address:

Port:

**Bell Timing**

Seconds to initialize bell event (0-10)

Apply Settings

**Device Functions**

Listen To Intercom    Remove Intercom

Speak To Intercom    Find All Intercoms

**Test Device**

**Play File:**

File Name:

**Additional Device Manager Options:** (for both TMEE Console and Direct Control configurations)

**Testing Devices:**

At the bottom of the Device Manager window, a WAV audio file can be selected and tested to an individual Digital Acoustics module in the Found Intercoms list.

**Listen To Intercom:**

The Listen To Intercom button will receive audio from Digital Acoustics intercom units with a microphone. The audio will play through the computer speakers. To stop listening, click the button a second time.

**Speak To Intercom:**

The Speak to Intercom button will broadcast audio from a microphone on the PC to the selected intercom in the Found Intercoms list.

**Remove Intercom:**

The Remove Intercom button will remove an intercom from the Found Intercoms list and from use in BellCommander. This will also free a license.

**Find All Intercoms:**

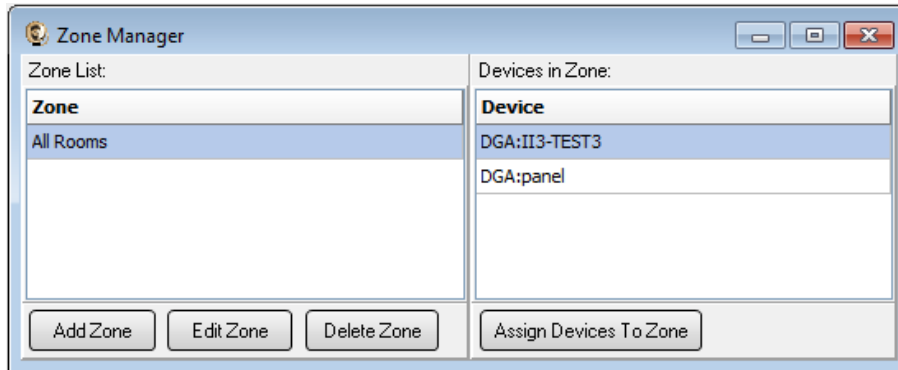
The Find All Intercoms button will retrieve all intercoms, including any intercoms that were previously removed, and display the intercoms in the list.

**Transport Method:**

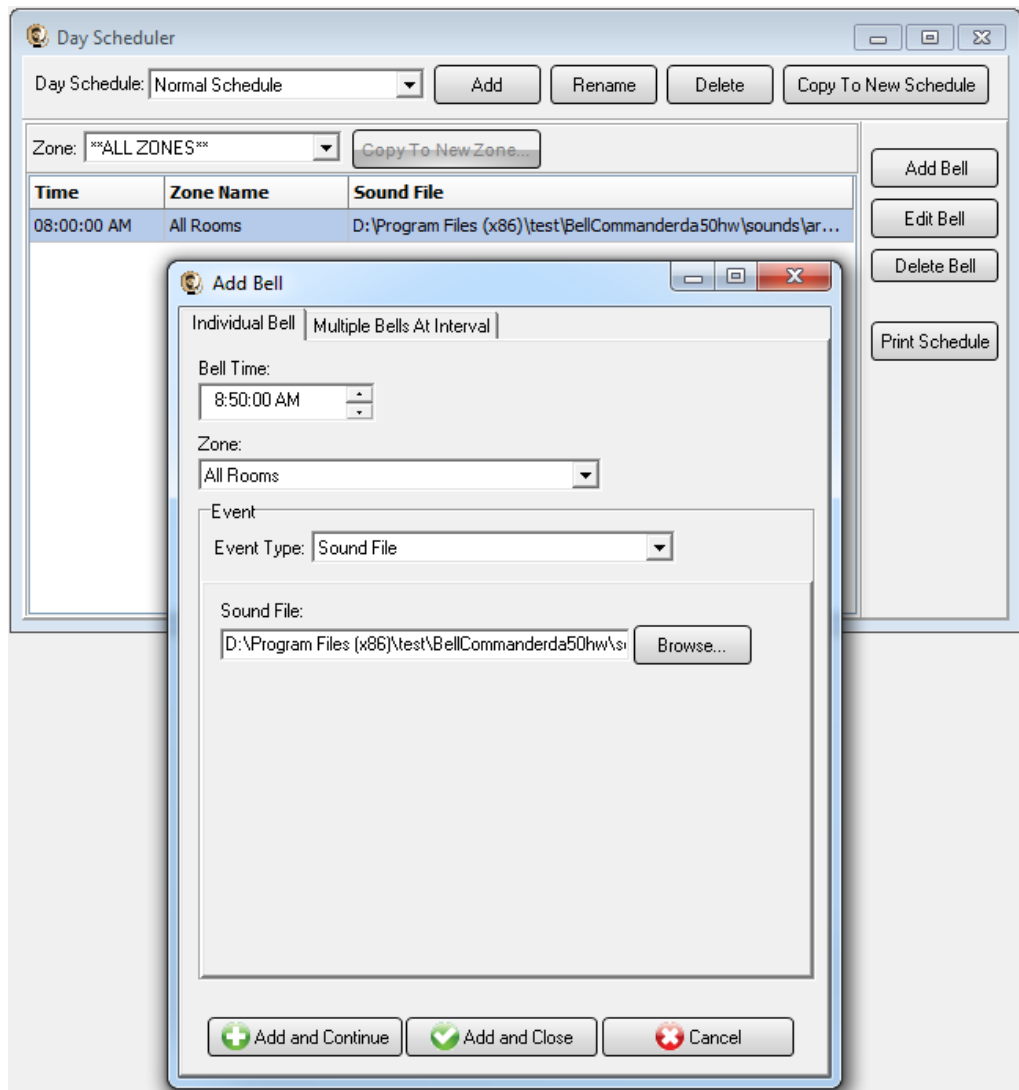
The transport method will determine how BellCommander sends audio to Digital Acoustics units. With lower numbers of Digital Acoustics modules, the Unicast TCP or Unicast UDP modes should work well. With larger numbers of units, the Multicast option is recommended to lower network traffic and improve performance.

### Scheduling For Digital Acoustics Devices:

1. Create a zone in BellCommander for each group of Digital Acoustics modules.
  - a. Click the Zones button to view the Zone Manager window.
  - b. Click the Add Zone button to add a new zone. Enter a name for the zone, ex. Elementary Classrooms.
  - c. Select the new zone and click the Assign Devices To Zone button. Select the Digital Acoustics modules from the Available Devices list and click the ">>" button to assign the devices to the zone.



2. Create a day schedule. A day schedule represents a single day's 24 hour schedule that can be applied to dates on the BellCommander calendar. To create a Day Schedule:
  - a. Click the Day Scheduler button.
  - b. Click the top Add button to add a new day schedule. Enter a name to identify the schedule, ex. Normal Schedule
  - c. Click the Add Bell button to add a new bell to the schedule. In the Add Bell window,
    - i. Select the time for the bell.
    - ii. Select the zone that the bell should play to.
    - iii. For a single sound file select, select "Sound File" for the event type and select a WAV audio file.



3. Assign the day schedule(s) to the Calendar Scheduler. To assign schedules to the Calendar Scheduler:
  - a. Click the Calendar button to view the Calendar Scheduler window.
  - b. Click the Set Default Weekly schedule button to set the default schedule and set the following values:

**Weeks in the schedule:**

If schedule is the same every week, select “Same schedule every week”.

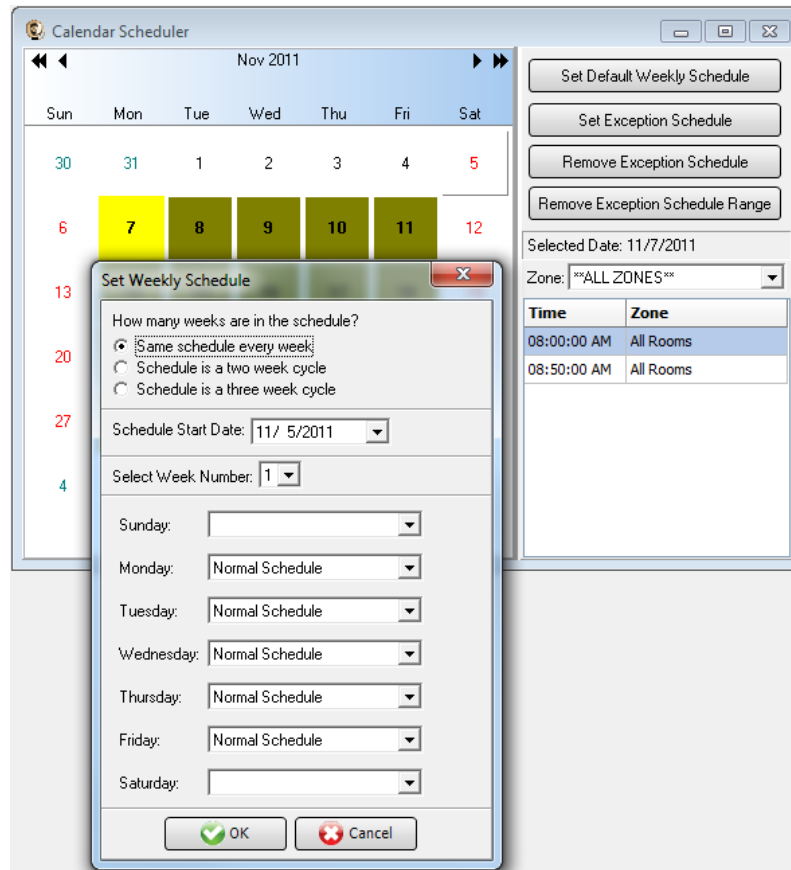
If schedule repeats bi-weekly, select “Schedule is a two week cycle”.

If schedule repeats tri-weekly, select “Schedule is a three week cycle”.

**Schedule Start Date** – If schedule starts in the future select a future date; otherwise, the default value (12/30/1899) will start the schedule immediately.

**Select Week Number** – If using a bi-weekly or tri-weekly schedule, this allows the first, second, or third week to be selected for the days of the week listed. Select 1 to program the first week, 2 to program the second week, 3 to program the third week.

**Days of the week** – Use the drop-down for each day of the to select a schedule. If no audio should be scheduled for the day of the week, leave the day name blank.

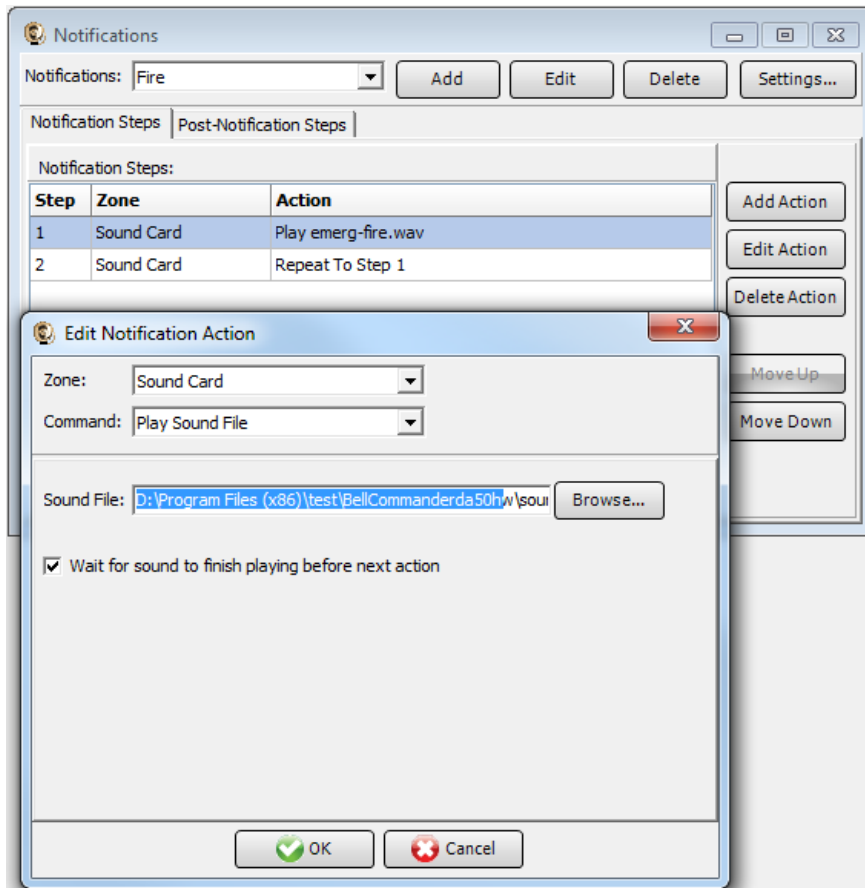


- c. To set different schedules by date, add additional schedules in the Day Scheduler and select dates on the calendar and click the Set Exception Schedule button to set different schedules by date.



## Notifications:

To configure notifications to play to Digital Acoustics modules, click the Notifications button on the BellCommander toolbar to open the Notifications window. Select one of the notifications and edit the action which plays the sound file. Change the zone for the action from “Sound Card” to the zone with the multicast address that will broadcast to the Digital Acoustics units and select a WAV audio file. MP3 audio files will not play to the Digital Acoustics units:



After changing the notification, test the notification by clicking the notification button in the notification bar on the left side of the main BellCommander window. Clicking the button once will activate the notifications. Clicking the button a second time will de-activate the notification. While a notification is active, no bell events will play.